



**CONVENT & STUART HALL**  
2018-19 HIGH SCHOOL PROFILE





## OUR HISTORY

Founded in 1887, Convent & Stuart Hall is an independent Catholic school that reflects a commitment to providing excellence in education, preparing graduates to be active and informed members of a global society. The high school offers academic and co-curricular programming in both single-sex and coed settings.

PRESIDENT: **Ann Marie Krejcarek**

HEAD OF CONVENT HIGH SCHOOL: **Rachel Simpson**

HEAD OF STUART HALL HIGH SCHOOL: **Tony Farrell**

## GLOBAL AWARENESS

As a Sacred Heart school with a membership of over 150 schools worldwide, Convent & Stuart Hall embraces and continues 200 years of education for global citizenship. In the belief that experiential learning is an essential component of a well-rounded curriculum, students may choose to participate in both U.S. and international reciprocal exchange programs ranging from two to six weeks.

## EDUCATION THAT LEADS TO PURPOSE-FILLED LIVES

Madeleine Sophie Barat, RSCJ, articulated her founding vision for a Sacred Heart education:

*...that education within the schools would be profound enough to inspire people to rebuild, renew and transform society, wherever they lived.*

In support of this vision, interdisciplinary course readings and seminar discussions at Convent & Stuart Hall inspire an ethical and global lens, as students look inward to find connections and develop their voice in service of the world.





## THE CURRICULAR PROGRAM

Convent & Stuart Hall’s curriculum serves and challenges the whole person – in mind, Heart and body. The freshman and sophomore years provide contemporary avenues of study. Students learn essential strategies that engage them in critical reasoning and advance their written and presentational communication skills across the humanities, mathematics, sciences, languages and the arts. This ninth and tenth grade experience sets students on a pathway towards increased elective programming in the junior and senior years, including the International Baccalaureate Diploma Programme and a suite of higher level teacher-curated and Advanced Placement courses. Convent & Stuart Hall follows a block schedule that rotates eight classes over a two-day period. All students enroll in six academic classes; a seventh elective class may be added in a particular field of interest.

## FACULTY

Our faculty includes educational thought leaders and graduates of universities from across the globe who are experts in their field of study and creative practitioners in the classroom. Every employee is charged to excel professionally and uphold the Goals and Criteria of the Sacred Heart. Seventy-seven percent of Convent & Stuart Hall’s faculty hold an advanced degree.

## ASSESSMENT AND GRADING PHILOSOPHY

Students receive grades in scheduled academic courses as a reflection of their performance on cumulative assessments. Assessments are varied, reflecting high expectations and standards of content mastery and communication skills in written and presentational form, as appropriate for each field of study. The school calculates both a weighted and unweighted GPA, with IBDP, AP and honors courses receiving an extra grade point. The unweighted GPA is the official grade of record. Given the rigorous curriculum taken by all students and the relatively small size of each grade level, our school does not rank students.

## SEQUENCE OF COURSE OFFERINGS & GRADUATION REQUIREMENTS

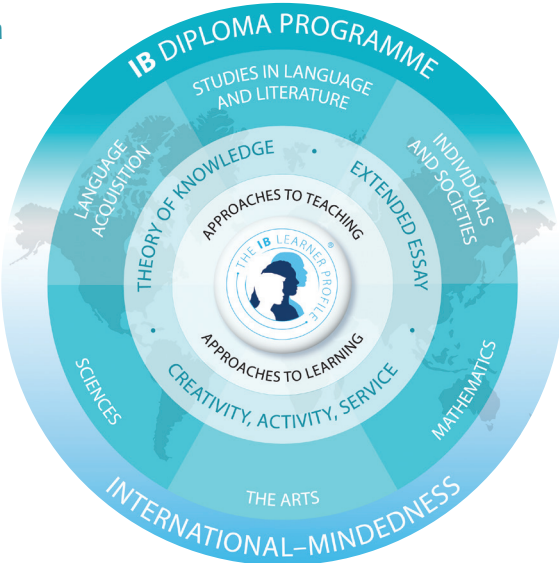
	FRESHMAN	SOPHOMORE	JUNIOR	SENIOR
<b>English</b> Eight semesters required	English I: Introduction to Genre & Literary Expression Honors English I: Introduction to Genre & Literary Expression	English II: Agency & Justice Honors English II: Agency & Justice	English III: American Literature Honors English III: American Literature English IB HL	English IV: World Literature & Composition AP English Literature & Composition English IB HL
<b>History &amp; Social Science</b> Six semesters required	History of the Ancient World: Roots & Connections	Modern World History: Humanism, Power & Responses to Oppression	U.S. History: The Unfinished Nation AP U.S. History AP Economics, Macro & Micro History IB SL: Topics in Modern World History History IB HL Global Politics IB SL, HL	U.S. Government: American Politics & Policy Principles of Economics Introduction to Psychology Gender, Power & Ethics AP European History AP Economics, Macro & Micro AP Art History History IB SL: Topics in Modern World History History IB HL Global Politics IB SL, HL
<b>Mathematics</b> Six semesters required (Eight semesters recommended)	Algebra I Geometry Honors Geometry Algebra II Honors Algebra II	Geometry Honors Geometry Algebra II Honors Algebra II Precalculus Honors Precalculus Calculus AP Calculus AB, BC	Algebra II Honors Algebra II Precalculus Honors Precalculus Calculus AP Calculus AB, BC Mathematical Studies IB SL Mathematics IB SL, HL	Precalculus Honors Precalculus Calculus AP Calculus AB, BC AP Statistics Mathematical Studies IB SL Mathematics IB SL, HL
<b>Science</b> Six semesters required	Physics Honors Physics	Chemistry Honors Chemistry	Biology AP Biology AP Chemistry Biology IB SL, HL Chemistry IB HL Physics IB SL, HL	Human Biology Forensics Astronomy Ecology & Population Biology Introduction to Organic Chemistry & Biochemistry AP Biology AP Chemistry AP Physics C: Mech and E&M Biology IB SL, HL Chemistry IB HL Physics IB SL, HL
<b>Modern &amp; Classical Languages</b> Six semesters of same language required	French I, II, III Honors French III, IV AP French French IB SL, HL	Spanish I, II, III Honors Spanish III, IV AP Spanish Spanish IB SL, HL	Chinese I, II, III Honors Chinese III, IV AP Chinese Chinese IB SL, HL	Latin I, II Honors Latin III, IV Latin IB SL, HL
<b>Religion, Theology &amp; Spirituality</b> Seven semesters required	The Question of Religion & Society World Religions	Sacred Texts Ethics & Morality	Ethics & Morality Theory of Knowledge IB	The Sacraments in Film & Fiction Justice Social Awareness & Action Theory of Knowledge IB
<b>Visual &amp; Performing Arts</b> Two semesters required	Art Foundations I: Studio Art Art Foundations I: Digital Design	Art Foundations II	Advanced Art Portfolio I, II Visual Arts IB SL, HL	Advanced Art Portfolio I, II AP Drawing AP Two-Dimensional Design Visual Arts IB SL, HL
	Choir A Cappella Foundations Instrumental Music: Jazz Band	Choir A Cappella Foundations Instrumental Music: Jazz Band	Choir A Cappella Foundations Instrumental Music: Jazz Band Music IB SL, HL	Choir A Cappella Foundations Instrumental Music: Jazz Band Music IB SL, HL
<b>Non-Departmental Electives</b>				
Computer Science		Computer II Honors Computer II	AP Computer Science A Computer Science IB SL, HL	AP Computer Science A Computer Science IB SL, HL
Journalism & Media	Introduction to Journalism	Journalism I	Journalism II, III	Journalism II, III

SL = Standard Level, HL = High Level Summer Forward Credit offered for Algebra, Geometry, Physics, Biology, U. S. History and et al. as appropriate.



THE INTERNATIONAL BACCALAUREATE DIPLOMA PROGRAMME (IBDP)

As a reflection of the strong match between the International Baccalaureate Diploma Programme’s mission “to develop inquiring, knowledgeable and caring young people” and the school’s commitment to challenge and educate students in “mind, Heart and body,” the school implemented the IBDP as a curricular offering in the 2016-17 school year. The IBDP is a two-year elective course of study for juniors and seniors. Students enrolled in the IBDP take IB courses exclusively, a majority of which are coed. The Class of 2018 was the first to sit for the full IB Diploma examinations and had great success.



IBDP Program Enrollment:

24 in class of '18  
59 in class of '19  
64 in class of '20

The Extended Essay is a signature component of the IB Diploma Programme. From selecting their topics, crafting research questions, performing research appropriate to the field of the essay topic, and writing their essays per the programme’s subject area requirements, students find themselves thinking more globally, altering their research questions when required by their findings and continuing to persevere even when the writing journey is difficult. Examples of these wide-ranging Extended Essay topics are sampled here:

Julia '18

**Subject Area:** Environmental Systems and Societies  
**Research Question:**  
To what extent does the potential release of methane gases in the subsurfaces of the coastal region of the Earth’s continents impact climate change?  
**Essay Title:** Climate Change and the Potential Release of Methane Gases

Seth '18

**Subject Area:** World Religions  
**Research Question:**  
To what extent do Salafi-Jihadi and Wahhabi interpretations of Islam influence the perception of the Yazidis as apostates?  
**Essay Title:** What Makes an Apostate? Islamic Fundamentalism and the Yazidis

ADVANCED PLACEMENT COURSES (AP)

Advanced Placement offerings are rigorous, discipline-specific courses, each with a prescribed curriculum and examination designed by the College Board.

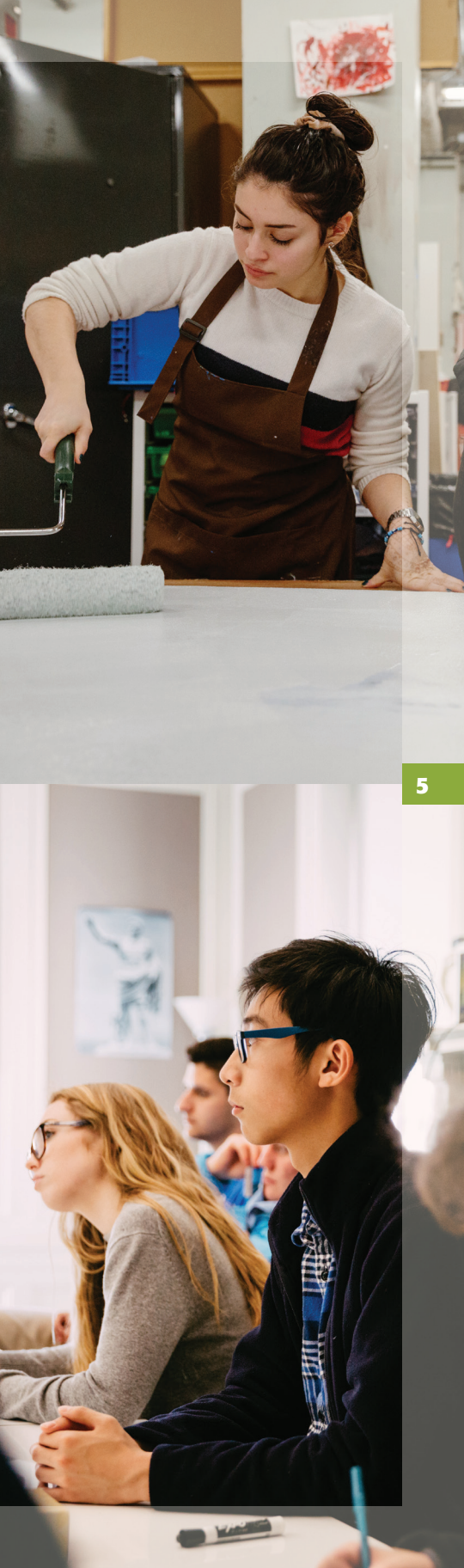
AP Course Enrollment:\*

48 in class of '18  
44 in class of '19  
20 in class of '20

\*Number of students enrolled in one or more AP courses. The majority of these students are taking multiple APs.



- AP English Literature and Composition
- AP United States History
- AP European History
- AP Macroeconomics
- AP Microeconomics
- AP Art History
- AP Calculus AB
- AP Calculus BC
- AP Statistics
- AP Biology
- AP Chemistry
- AP Physics C: Mechanics
- AP Physics C: Electricity and Magnetism
- AP French
- AP Spanish
- AP Chinese
- AP Computer Science A
- AP Drawing
- AP Two-Dimensional Design





2015-18 CONVENT COLLEGE MATRICULATION

Arizona State University  
Boston University  
Brown University  
Bucknell University  
Butler University  
California Polytechnic State University,  
San Luis Obispo  
California State University, Sacramento  
Chapman University  
Claremont McKenna College  
Colby College

Colgate University  
College of Charleston  
Colorado School of Mines  
Columbia University  
Connecticut College  
DePauw University  
Duke University  
Durham University  
Emory University  
Fordham University  
Georgetown University  
Georgia Institute of Technology  
Gonzaga University  
Harvey Mudd College  
Hobart and William Smith Colleges  
Holy Cross College  
Hotelschool The Hague  
James Madison University  
John Cabot University  
Johns Hopkins University  
Johnson & Wales University  
Kenyon College  
Lake Forest College  
Lawrence University  
Lehigh University  
Loyola Marymount University  
Loyola University Chicago  
Manhattan College  
Marist College  
Middlebury College  
Mount Holyoke College  
New York University  
Northeastern University  
Pace University  
Parsons School of Design  
Pomona College  
Providence College  
Purdue University  
Regis University  
San Diego State University  
San Francisco State University  
Santa Clara University  
Sarah Lawrence College

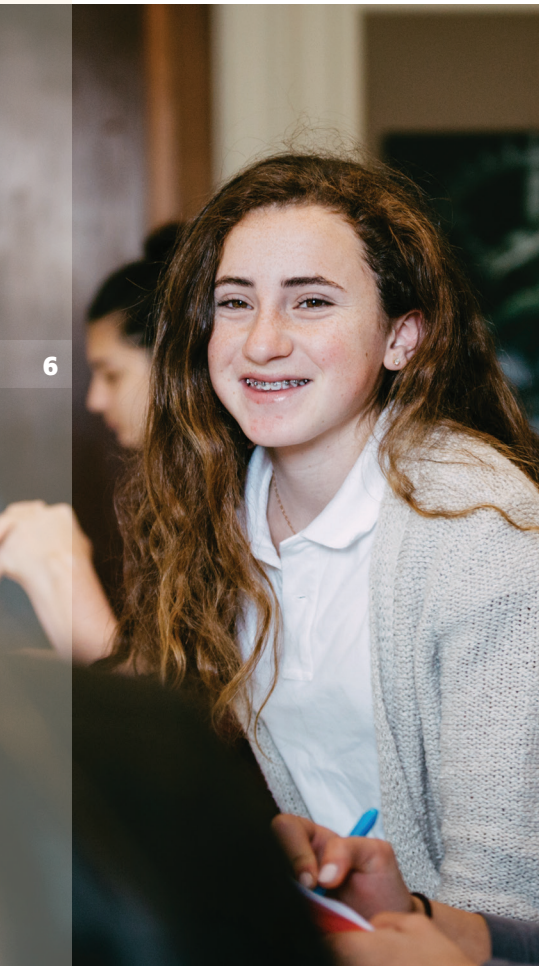
Seattle University  
St. Olaf College  
Stanford University  
Syracuse University  
Texas Christian University  
The American University of Paris  
The George Washington University  
The University of Alabama  
Trinity University  
Tufts University  
Tulane University  
United States Naval Academy  
University of Arizona  
University of British Columbia  
University of California at Berkeley  
University of California at Davis  
University of California at Irvine  
University of California at Los Angeles  
University of California at Merced  
University of California at Santa Barbara  
University of California at Santa Cruz  
University of Colorado at Boulder  
University of Denver  
University of Hawai'i at Mānoa  
University of Kansas  
University of Michigan  
University of Oregon  
University of Pennsylvania  
University of Portland  
University of Puget Sound  
University of San Diego  
University of San Francisco  
University of Southern California  
University of St Andrews  
University of Washington  
University of Wisconsin at Madison  
Vassar College  
Villanova University  
Wake Forest University  
Washington University in St. Louis  
Whittier College  
Willamette University  
Xavier University

2015-18 STUART HALL COLLEGE MATRICULATION

Academy of Art University  
Bates College  
Berklee College of Music  
Boston College  
Boston University  
Bowdoin College  
Bucknell University  
Cal Maritime  
California Lutheran University  
California Polytechnic State University,  
San Luis Obispo  
California State University, Bakersfield  
California State University, Sacramento  
Canisius College  
Carleton College  
Chapman University  
Claremont McKenna College  
Clemson University  
Colby College  
Colgate University  
College of Marin  
College of the Holy Cross  
Columbia University  
Cornell University  
Dartmouth College  
Denison University  
Dominican University of California  
Drexel University  
Duke University  
Fordham University  
Franklin & Marshall College  
Gonzaga University  
Hamilton College  
Lafayette College  
Lewis & Clark College  
Linfield College  
Loyola Marymount University  
Loyola University Chicago  
Loyola University Maryland  
Loyola University New Orleans  
Massachusetts Institute of Technology  
Northeastern University

Northern Arizona University  
Northwestern University  
Ohio Wesleyan University  
Pennsylvania State University  
Regis University  
Rochester Institute of Technology  
Roger Williams University  
Roosevelt University  
St. Mary's College of California  
San Francisco State University  
San Jose State University  
Santa Clara University  
Sarah Lawrence College  
School of the Art Institute of Chicago  
Seattle University  
Sierra College  
Southern Methodist University  
St. John's University  
Syracuse University  
Tufts University  
University of Arizona  
University of California at Berkeley  
University of California at Davis  
University of California at Irvine  
University of California at Los Angeles  
University of California at Merced  
University of California at Riverside  
University of California at San Diego  
University of California at Santa Barbara  
University of California at Santa Cruz  
University of Chicago  
University of Colorado at Boulder  
University of Massachusetts  
University of Minnesota, Twin Cities  
University of Mississippi  
University of Portland  
University of Puget Sound  
University of San Diego  
University of San Francisco  
University of South Carolina  
University of Southern California

University of St Andrews  
University of Washington  
University of Wisconsin, Madison  
Washington University in St. Louis  
Wheaton College  
Whitman College  
Whittier College  
Wofford College  
Xavier University



ACCEPTED, NOT MATRICULATED

Barnard College  
Bates College  
Boston College  
Carleton College

Carnegie Mellon University  
McGill University  
Northwestern University  
Oberlin College

Pitzer College  
University of Notre Dame  
University of Virginia  
Wesleyan University



ACCEPTED, NOT MATRICULATED

Amherst College  
Brown University  
Carnegie Mellon University  
Davidson College

Grinnell College  
Harvey Mudd College  
New York University  
Pitzer College

Pomona College  
Swarthmore College  
United States Coast Guard Academy  
University of Michigan





STUDENT BODY PROFILE

The **2018-19** **217** for Convent High School  
ENROLLMENT is **213** for Stuart Hall High School  
AND

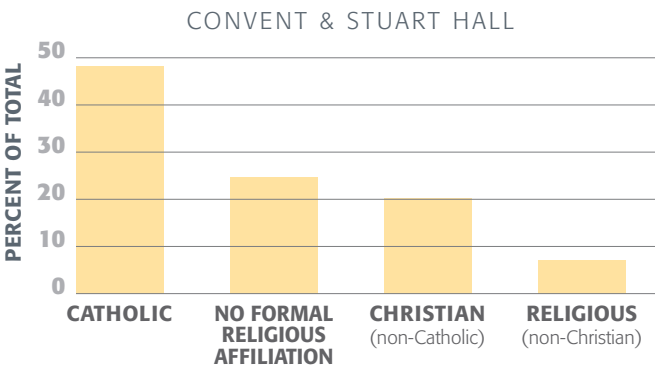
**42%** OF STUDENTS  
receive need-based financial aid  
with grants ranging from **\$2,500-\$43,000**

ETHNICITY OF STUDENT BODY

**37%** STUDENTS  
OF COLOR AT  
CONVENT

**42%** STUDENTS  
OF COLOR AT  
STUART HALL

RELIGION OF STUDENT BODY



*Founded in the spirit of transformation and as a counterweight to the revolutionary upheaval of France in 1789, Schools of the Sacred Heart was established in 1800 by Madeleine Sophie Barat with a mission to effect broad-reaching social change. Providing education to young women and men as a global imperative remains at the core of the school today.*

*Adopting tenets from the Sacred Heart Network and making them specific to San Francisco, Convent & Stuart Hall's K-12 continuum engages a relevant foundational mission and embraces our five unifying Goals and Criteria, while looking ahead to ask what skills will be needed in the future.*

MISSION

*Convent & Stuart Hall educates mind, Heart and body, animating a zeal for discovery, inspiring a passion for justice and nurturing the strength to transform.*

SACRED HEART GOALS

*a personal and active faith in God*  
*a deep respect for intellectual values*  
*a social awareness that impels to action*  
*the building of community as a Christian value*  
*personal growth in an atmosphere of wise freedom*





In our commitment to sustaining an inclusive learning community, Convent & Stuart Hall admits students of any race, color, national/ethnic origin or ancestry, religion, sex, sexual orientation, gender identity or disability. The school does not discriminate on the basis of race, color, national/ethnic origin or ancestry, religion, sex, sexual orientation, gender identity, disability, age, marital status or any other consideration protected by federal, state or local laws in the administration of its educational, admissions, financial aid and employment policies, or any other programs administered by the school.

2222 Broadway, San Francisco, CA 94115 415-563-2900 [www.sacredsfs.org](http://www.sacredsfs.org)